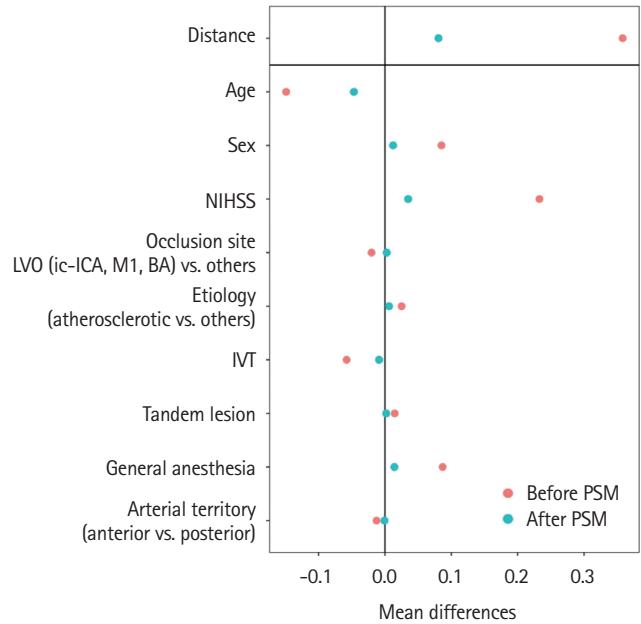


Supplementary Figure 1. Inclusion flowchart.



Supplementary Figure 2. Standardized mean differences before (red points) and after (blue points) propensity-score matching (PSM) between the patients with COVID-19 and controls, for the variables used for matching. NIHSS, National Institutes of Health Stroke Scale; LVO, large vessel occlusion; ic-ICA, intracranial internal carotid artery; M1, middle cerebral artery (M1 segment); BA, basilar artery; IVT, intravenous thrombolysis.