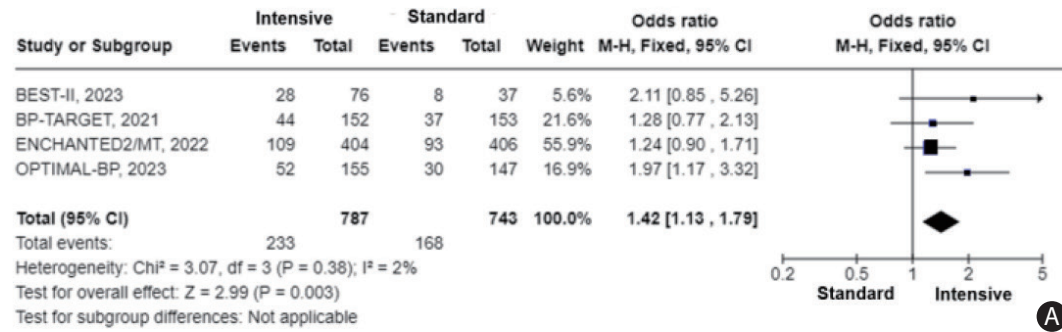
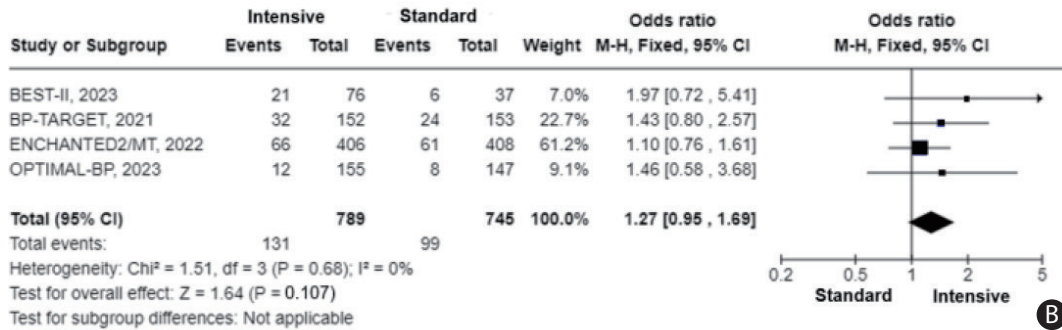


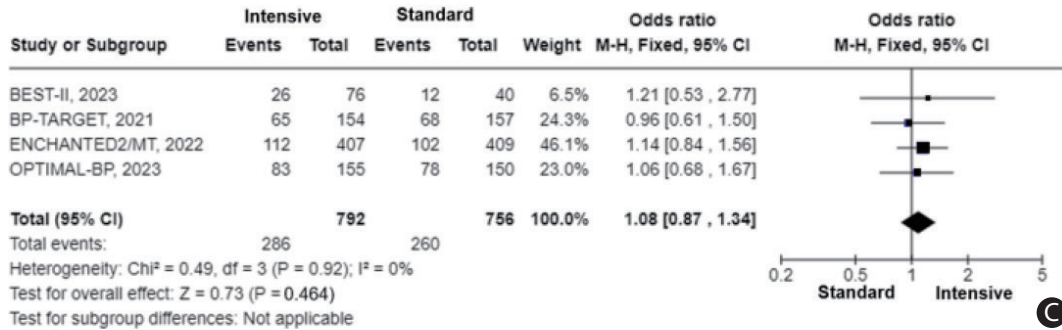
Severe disability or death (mRS 5 or 6)



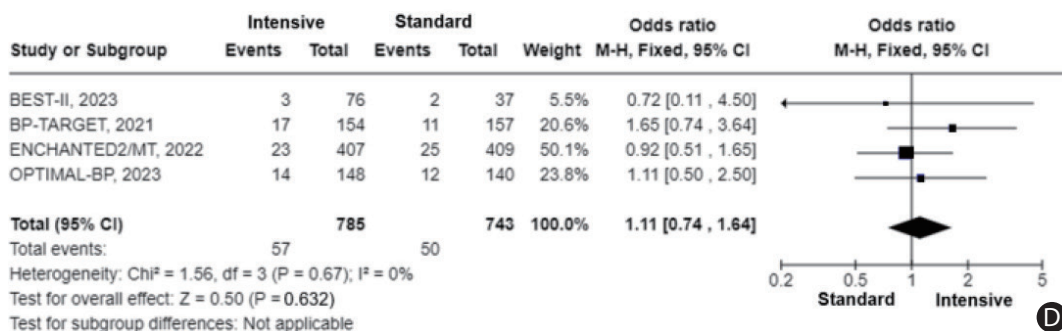
All-cause mortality



Any ICH

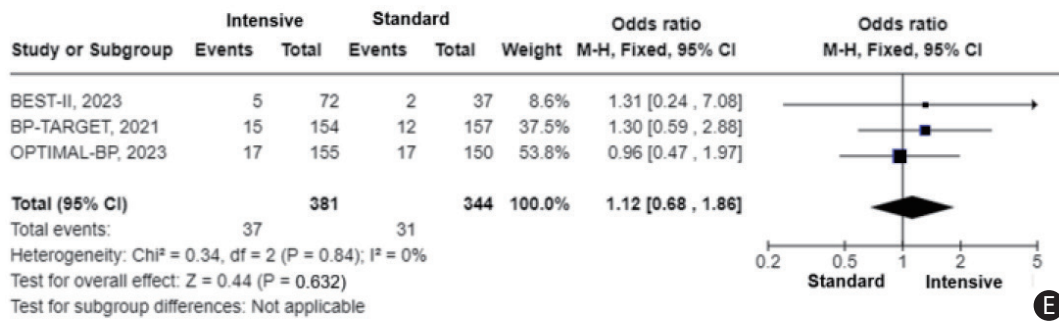


Symptomatic ICH



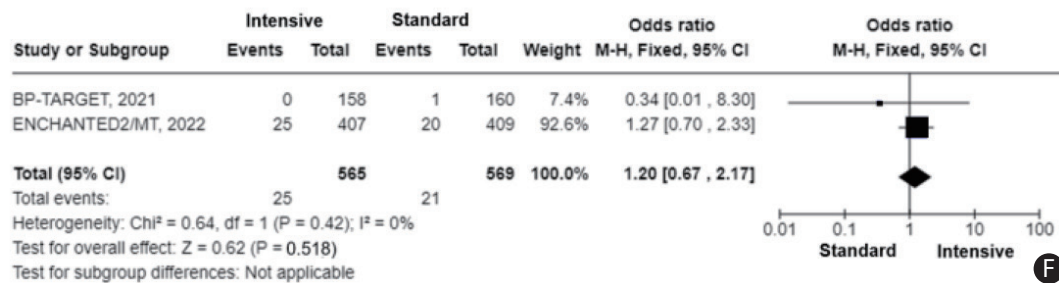
Supplementary Figure 4. Forest plot of the safety outcomes as sensitivity analysis.^{20,26-28} (A) Severe disability or death (mRS 5 or 6). (B) All-cause mortality. (C) Any intracerebral hemorrhage. (D) Symptomatic intracerebral hemorrhage. mRS, modified Rankin Scale; ICH, intracerebral hemorrhage; CI, confidence interval.

PH2



E

Stroke recurrence



F

Supplementary Figure 4. Forest plot of the safety outcomes as sensitivity analysis.^{20,26-28} (E) Parenchymal hematoma type 2 (PH2). (F) Stroke recurrence. CI, confidence interval.