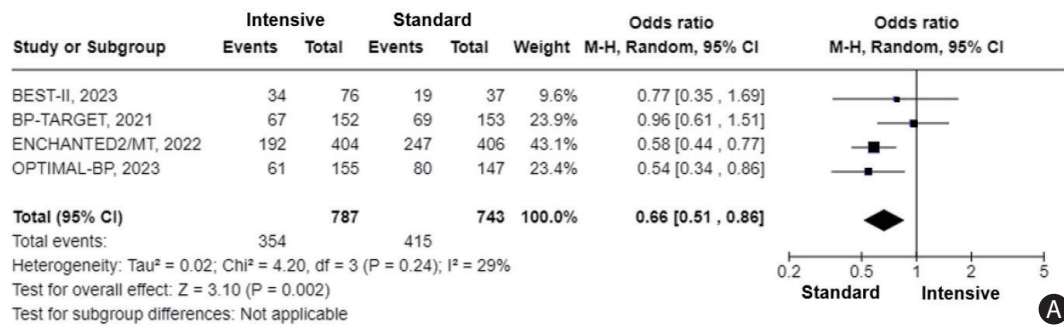
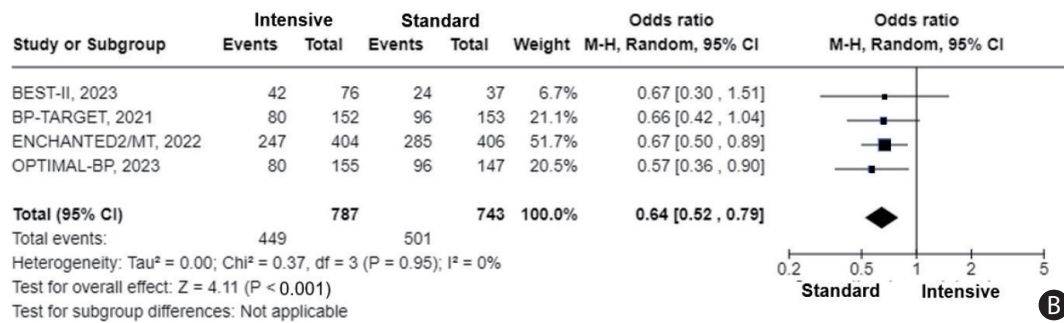


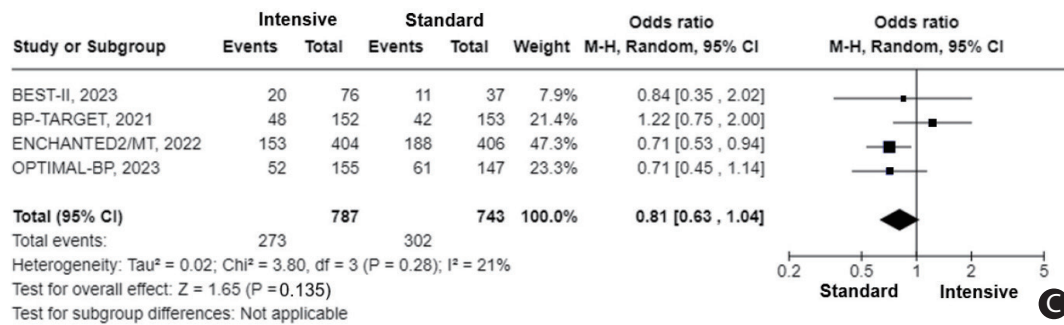
Functional independence (mRS≤2)



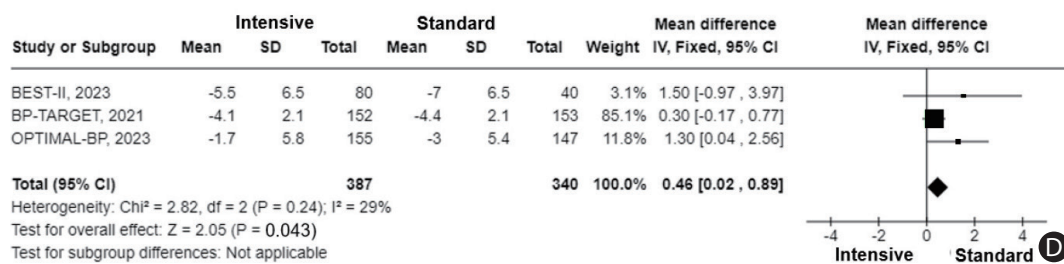
Walking without assistance (mRS≤3)



Minimally or no disability (mRS≤1)



NIHSS change at 24 hours after EVT



**Supplementary Figure 3.** Forest plot of the efficacy outcome as sensitivity analysis.<sup>20,26-28</sup> (A) Functional independence (mRS≤2). (B) Walking without assistance (mRS≤3). (C) Minimally or no disability (mRS≤1). (D) NIHSS change at 24 hours after endovascular thrombectomy. mRS, modified Rankin Scale; NIHSS, National Institutes of Health Stroke Scale; EVT, endovascular thrombectomy; CI, confidence interval.