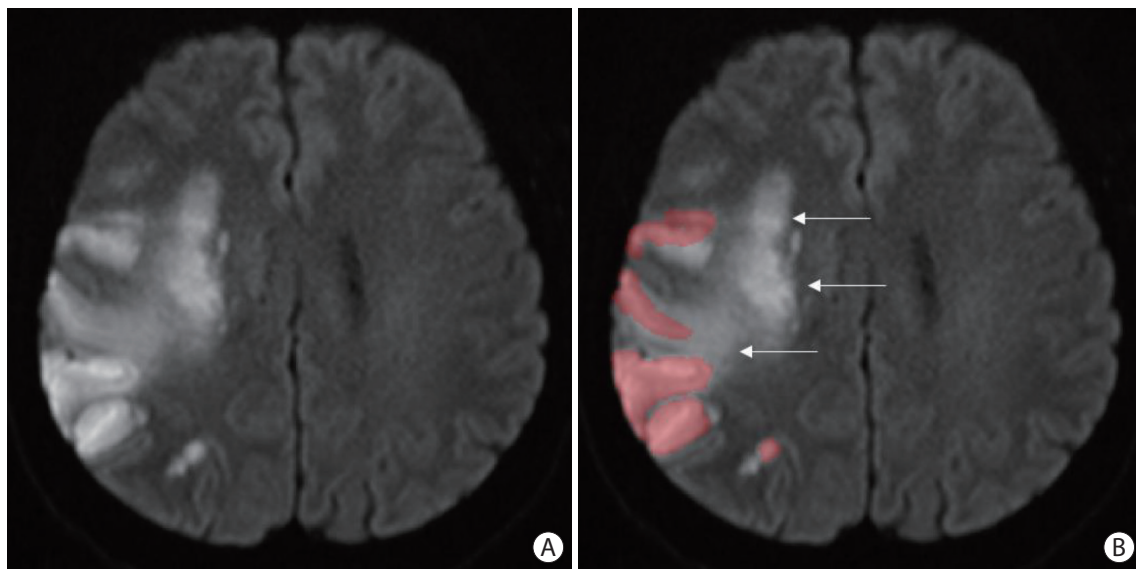


Supplementary Figure 1. Infarct segmentation on non-contrast head CT using the open-source software ITK-SNAP. (A) A segmented infarct area (total infarct volume) on a non-contrast head CT slice. (B) The same slice without the segmentation volume. Manual segmentation was repeated for each slice. Segmentations of grey matter infarct volumes, basal ganglia infarct volumes, and hemorrhage volumes was performed in an identical manner.



Supplementary Figure 2. Example of a grey matter segmentation. (A) The 24-h diffusion-weighted MRI without segmentation. (B) The segmentation volume on an exemplary slice is highlighted in red. White matter infarcts (white arrows) are not included in the segmentation volume.