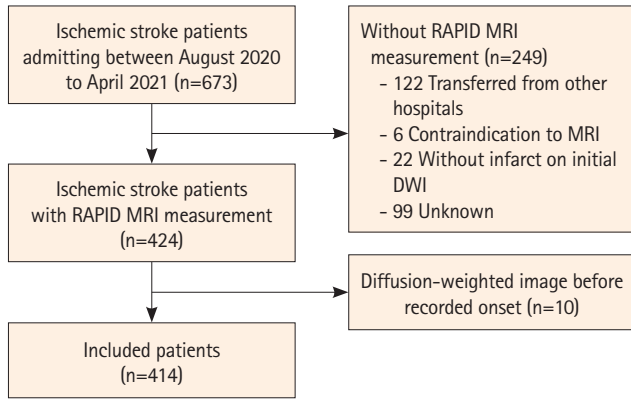
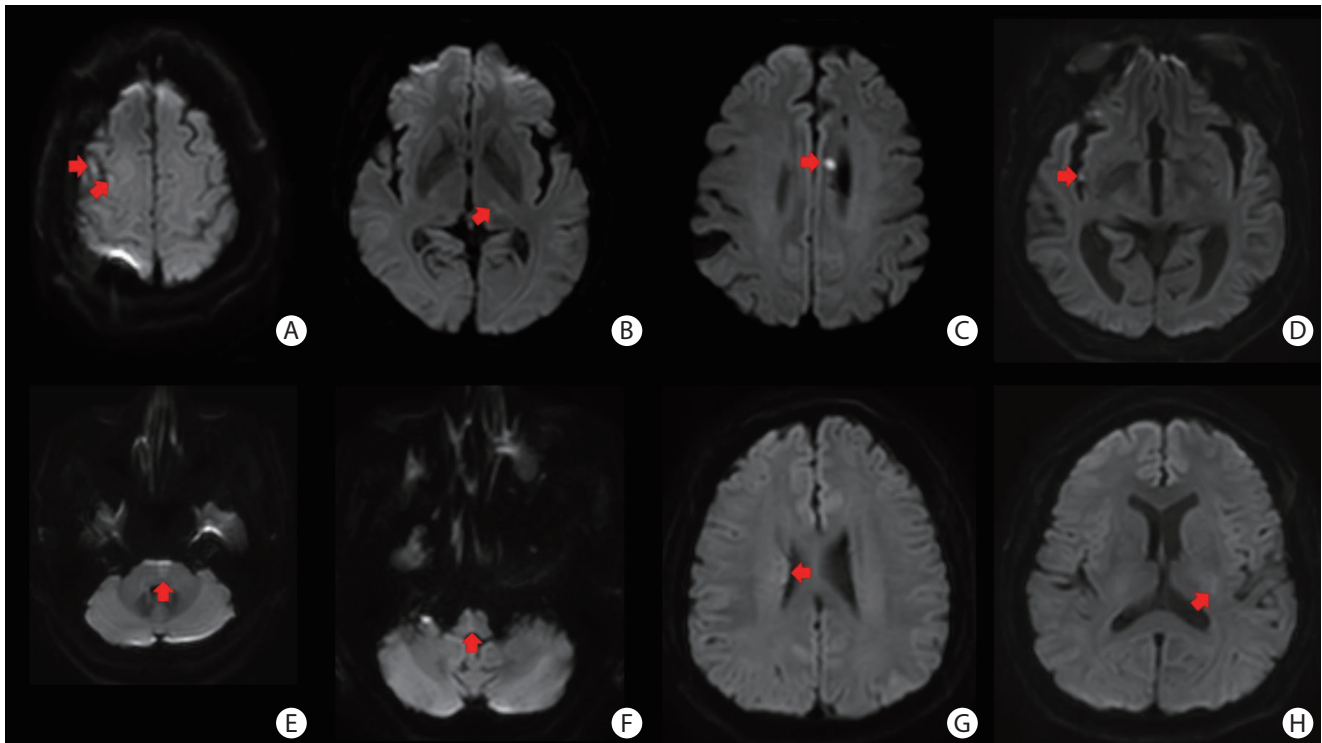


Supplementary Table 3. Comparison between JBS-01K and RAPID MRI in patient undergoing endovascular treatment using linear regression (n=35)

	R-squared	Root mean squared error	Akaike information criterion	Log-likelihood	P
JBS-01K	0.91	6.98	237.27	-116.73	<0.001
RAPID MRI	0.81	14.73	289.57	-142.79	



Supplementary Figure 1. Study flow chart. DWI, diffusion-weighted imaging; MRI, magnetic resonance imaging.



Supplementary Figure 2. Infarct lesions on diffusion-weighted images missed by JBS-01K. (A-H) Eight diffusion-weighted images with infarcts that were missed by JBS-01K (Dice coefficient similarity of 0). Red arrows indicate presumed infarct areas. Except for image (C), the other seven images showed small and faint lesions.