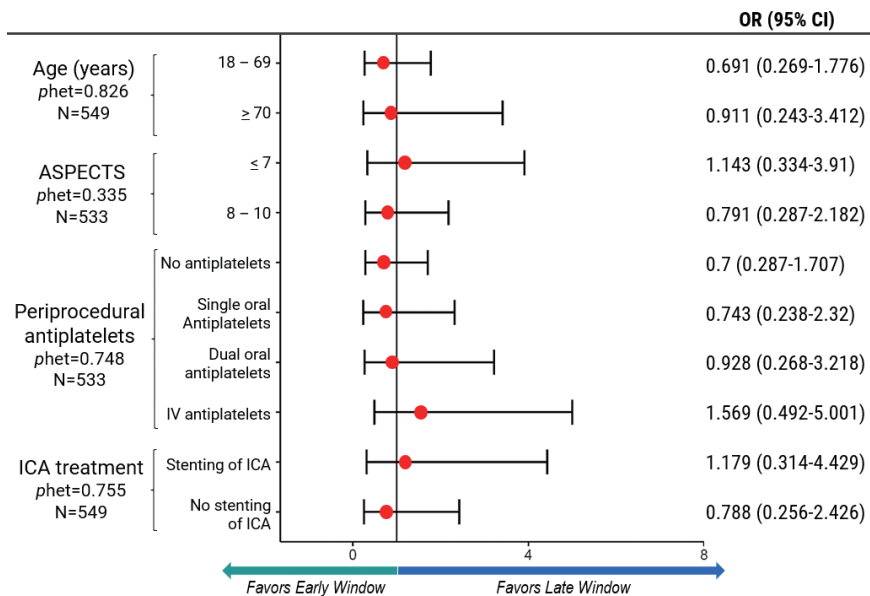


Supplementary Figure 1. Forest plot showing late window adjusted effect for favorable clinical functionality (mRS 0–2) at 90 days in pre-specified groups. mRS, modified Rankin Scale; OR, odds ratio; CI, confidence interval; phet, heterogeneity *P*-value; ASPECTS, Alberta Stroke Program Early Computed Tomography Score; IV, intravenous; ICA, internal carotid artery.



Supplementary Figure 2. Forest plot showing early vs. late window adjusted effect for sICH and PH2 in pre-specified groups. sICH, symptomatic intracranial hemorrhage; PH2, parenchymal hematoma type 2; OR, odds ratio; CI, confidence interval; phet, heterogeneity *P*-value; ASPECTS, Alberta Stroke Program Early Computed Tomography Score; IV, intravenous; ICA, internal carotid artery.