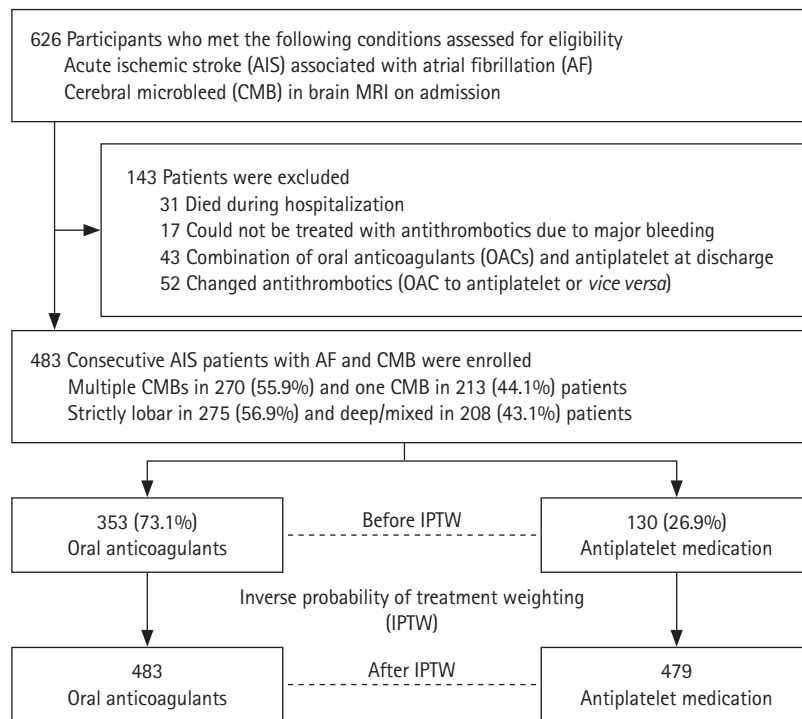


Supplementary Table 2. Efficacy and safety of oral anticoagulant and antiplatelet therapies

Independent variable	Hazard ratio (95% confidence interval)				
	Stroke	Recurrent IS	ICH	All-cause death	MACE
All patients					
Antiplatelet therapy	Reference	Reference	Reference	Reference	Reference
Anticoagulants	0.42 (0.23–0.76)	0.39 (0.20–0.76)	0.72 (0.24–2.15)	0.71 (0.42–1.22)	0.46 (0.27–0.80)
VKA	0.48 (0.26–0.88)	0.42 (0.21–0.85)	0.83 (0.28–2.57)	0.71 (0.41–1.25)	0.53 (0.30–0.93)
NOACs	0.22 (0.06–0.74)	0.27 (0.08–0.92)	0.31 (0.04–2.89)	0.73 (0.35–1.52)	0.24 (0.08–0.72)
Patients with multiple CMBs					
Antiplatelet therapy	Reference	Reference	Reference	Reference	Reference
Anticoagulants	0.38 (0.19–0.75)	0.37 (0.17–0.82)	0.49 (0.16–1.50)	0.49 (0.26–0.95)	0.38 (0.20–0.74)
VKA	0.43 (0.22–0.87)	0.40 (0.18–0.92)	0.54 (0.17–1.73)	0.44 (0.22–0.89)	0.45 (0.23–0.87)
NOACs	0.21 (0.05–0.89)	0.28 (0.06–1.24)	0.31 (0.04–2.62)	0.69 (0.29–1.67)	0.17 (0.04–0.76)
Patients with strictly lobar CMB					
Antiplatelet therapy	Reference	Reference	Reference	Reference	Reference
Anticoagulants	0.36 (0.17–0.75)	0.37 (0.16–0.89)	0.50 (0.16–1.59)	0.96 (0.46–1.97)	0.51 (0.25–1.01)
VKA	0.41 (0.19–0.88)	0.40 (0.16–1.01)	0.57 (0.17–1.87)	0.99 (0.47–2.09)	0.57 (0.28–1.17)
NOACs	0.21 (0.05–0.93)	0.29 (0.06–1.32)	0.30 (0.03–2.66)	0.91 (0.34–2.45)	0.31 (0.09–1.09)

IS, ischemic stroke; ICH, intracerebral hemorrhage; MACE, major adverse cardiovascular events; VKA, vitamin K antagonist; NOAC, non-vitamin K antagonist oral anticoagulant; CMB, cerebral microbleed.



Supplementary Figure 1. Subject enrollment flowchart. MRI, magnetic resonance imaging.